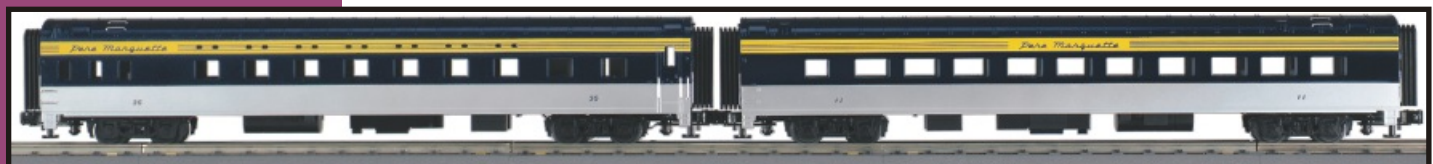




70' Sleeper/Diner Cars Smooth side

20-6617
20-6618
20-6616
20-6614
20-6623
20-6636
20-6634
20-6633
20-6638
20-6635



70' Sleeper/Diner Cars

Diner Car Parts

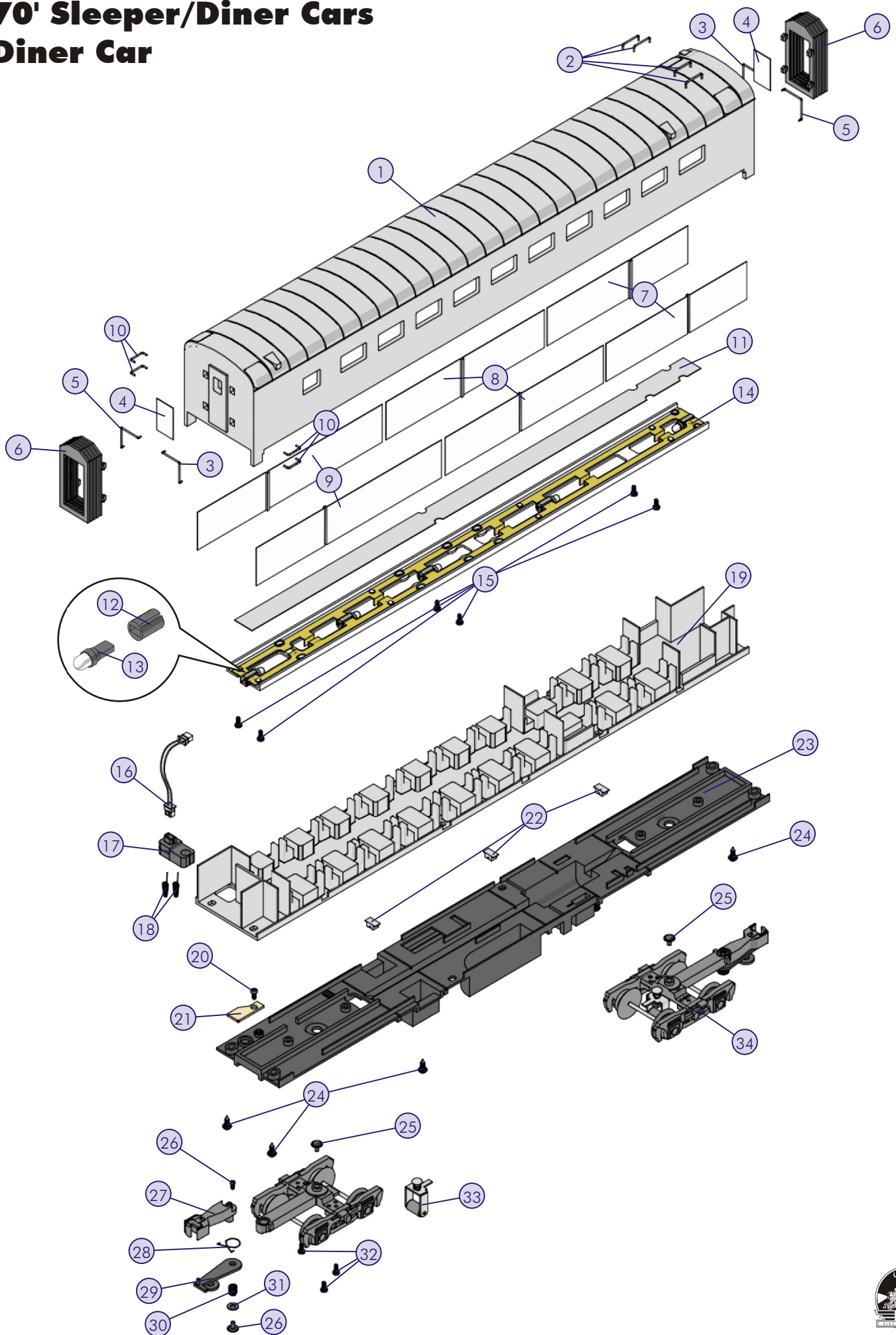
Name and Number	Part #	\$Price Per Unit
1.) Shell (Alaska)(# 208)	GD-0100150	*30.00
1.) Shell (Southern)(# 3312)	GD-0100151	*30.00
1.) Shell (NYC)(# 406)	GD-0100152	*30.00
1.) Shell (Southern Pacific) (# 156)(Lake Pepin)	GD-0100153	*30.00
1.) Shell (N&W)(# 491)	GD-0100154	*30.00
1.) Shell (CNW)(# 6148)	GD-0100155	*30.00
1.) Shell (EMD) (Cascade Summit)	GD-0100156	*30.00
1.) Shell (PM)(# 11)	GD-0100157	*30.00
1.) Shell (UP) (City of Los Angeles)	GD-0100158	*30.00
1.) Shell (KCS)(# 56)	GD-0100159	*30.00
1.) Shell (B&O)(# 1078)	GD-0100160	*30.00
2.) Handrail (13.2mm)	GD-0100038	1.00
3.) Handrail (right)(27.0mm)	GD-0100040	2.00
4.) Window (15.0x31.0mm)	FA-0100016	1.00
5.) Handrail (left)(27.0mm)	GD-0120002	2.00
6.) Diaphragm	FI-0000016	2.00
7.) Window	FA-0100023	2.00
8.) Window	FA-0100024	2.00
9.) Window	FA-0100025	2.00
10.) Handrail (10.6mm)	GD-0100139	1.00
11.) Reflective tape	CI-0000018	1.00
12.) Bulb socket	CH-0000007	1.00
13.) Bulb	CG-0000011	1.00
14.) Bulb guide	CH-0000022	10.00
15.) Screw	IA-0000213	0.15
16.) Wire harness	BC-0000029	2.00
17.) Contact spring base	BH-0000001	2.00
18.) Contact spring	IE-0000015	0.50
19.) Seat detail	GD-0100169	*10.00
20.) Screw	IA-0000084	0.15
21.) Contact board	BH-0000026	2.00
22.) Wire strap	IH-0000097	0.50
23.) Chassis	GB-0100008	*12.00
24.) Screw	IA-0000025	0.15
25.) Screw	IA-0000214	0.15
26.) Screw	IA-0000028	0.15
27.) Coupler	DD-0000023	3.00
28.) Spring (centering)	IE-0000040	0.50
29.) Armature	DD-0000014	1.00
30.) Spring	DD-0000041	0.15
31.) Washer	ID-0000068	0.15
32.) Screw	IA-0000198	0.15
33.) Pick-up	BD-0000025	5.00
34.) Truck (black)	DA-0000006	20.00
34.) Truck (silver)	DA-0000007	20.00
34.) Truck (Brunswick green)	DA-0000008	20.00

*Requires Exchange
All parts are priced as each



70' Sleeper/Diner Cars

Diner Car



70' Sleeper/Diner Cars

Sleeper Car Parts

Name and Number	Part #	\$Price Per Unit
1.) Shell (Alaska)(# 173)	GD-0100170	*30.00
1.) Shell (Southern)(# 2014) (Shenandoah River)	GD-0100171	*30.00
1.) Shell (NYC) (Queensboro Bridge)	GD-0100172	*30.00
1.) Shell (Southern Pacific) (# 600)(Mount Hood)	GD-0100173	*30.00
1.) Shell (N&W) (Duke University)	GD-0100174	*30.00
1.) Shell (CNW)(# 6154)	GD-0100175	*30.00
1.) Shell (EMD) (Sierra Mountains)	GD-0100176	*30.00
1.) Shell (PM)(# 35)	GD-0100177	*30.00
1.) Shell (UP)(Wyoming)	GD-0100178	*30.00
1.) Shell (KCS) (Arthur Stilwell)	GD-0100179	*30.00
2.) Handrail (10.6mm)	GD-0100139	1.00
3.) Handrail (13.2mm)	GD-0100038	1.00
4.) Handrail (right)(27.0mm)	GD-0100040	2.00
5.) Window (15.0x31.0mm)	FA-0100016	1.00
6.) Handrail (left)(27.0mm)	GD-0120002	2.00
7.) Diaphragm	FI-0000016	2.00
8.) Window	FA-0100023	2.00
9.) Window	FA-0100024	2.00
10.) Window	FA-0100025	2.00
11.) Handrail (14.8mm)	GD-0100139	1.00
12.) Reflective tape	CI-0000018	1.00
13.) Bulb socket	CH-0000007	1.00
14.) Bulb	CG-0000011	1.00
15.) Bulb guide	CH-0000022	10.00
16.) Screw	IA-0000213	0.15
17.) Wire harness	BC-0000029	2.00
18.) Contact spring base	BH-0000001	2.00
19.) Contact spring	IE-0000015	0.50
20.) Seat detail	GD-0100189	*10.00
21.) Screw	IA-0000084	0.15
22.) Contact board	BH-0000026	2.00
23.) Wire strap	IH-0000097	0.50
24.) Chassis	GB-0100008	*12.00
25.) Screw	IA-0000025	0.15
26.) Screw	IA-0000214	0.15
27.) Screw	IA-0000028	0.15
28.) Coupler	DD-0000023	3.00
29.) Spring (centering)	IE-0000040	0.50
30.) Armature	DD-0000014	1.00
31.) Spring	DD-0000041	0.15
32.) Washer	ID-0000068	0.15
33.) Screw	IA-0000198	0.15
34.) Pick-up	BD-0000025	5.00
35.) Truck (black)	DA-0000006	20.00
35.) Truck (silver)	DA-0000007	20.00
35.) Truck (Brunswick green)	DA-0000008	20.00

*Requires Exchange
All parts are priced as each



70' Sleeper/Diner Cars

Sleeper Car

